

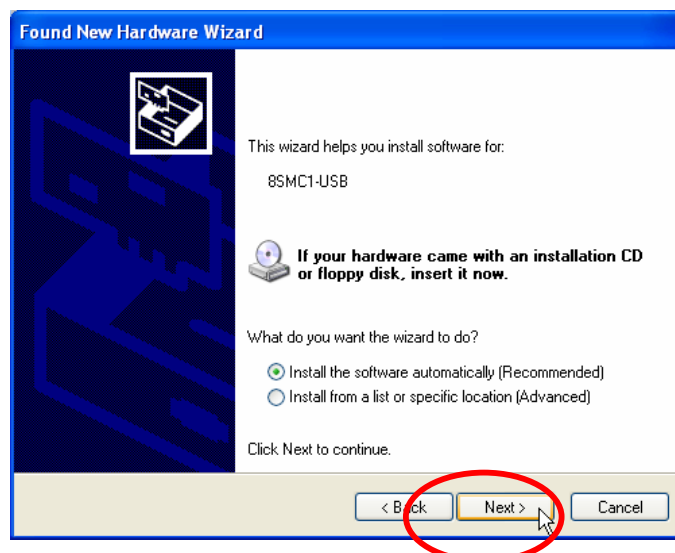
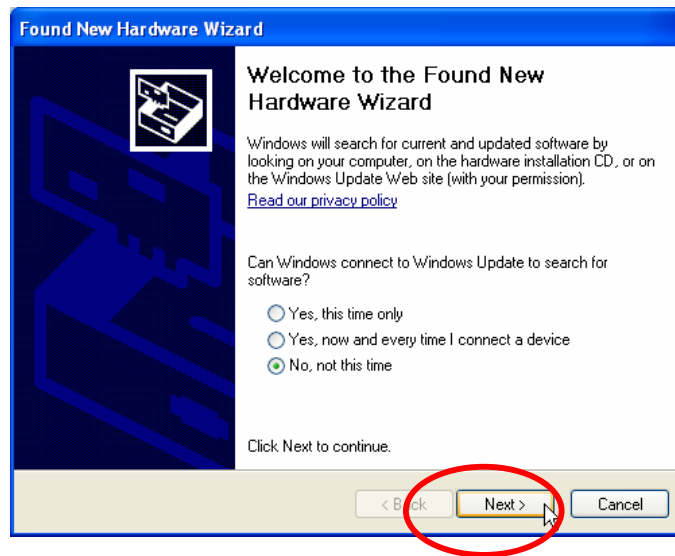
# USBC1 Stepper Motor Controller

## Installation Manual



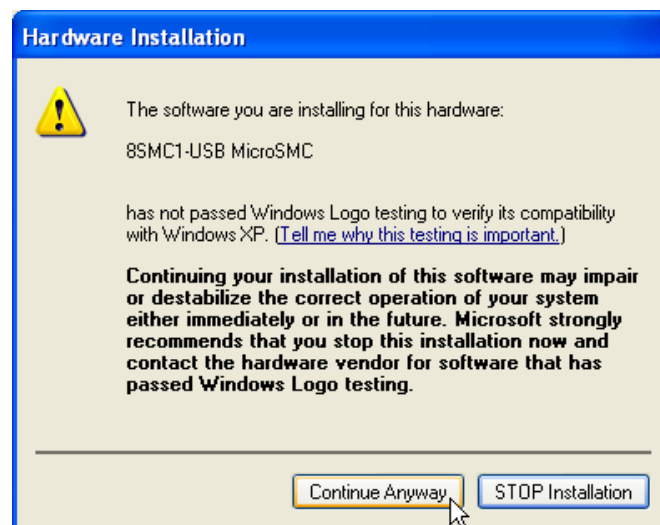
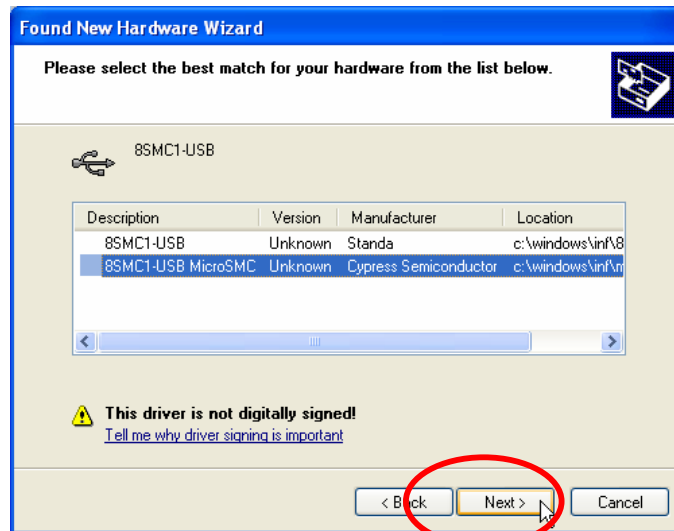
## 1.0 Standa USB Software Installation Guide

1. Install the DeltaPix Service Package 2 from DeltaPix software CD (Run the [DeltaPix\\_1.11.SP2.exe](#) file from the CD).
2. Plug the Standa controller, the USB cable to the PC USB interface. **Don't plug any other cables in the box before you plug the USB cable!** A new box will start up.

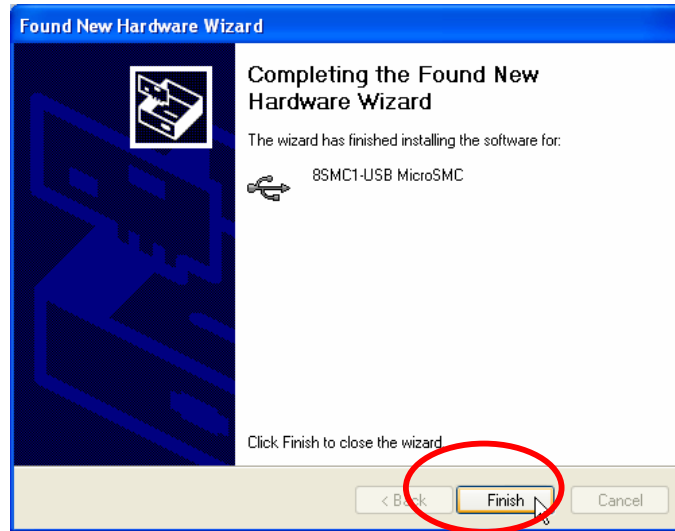


Select next and wait...

On some computers you will be asked to select between different drivers, and if so, select the 8SMC1-USB MicroSMC Cypress Semiconductor manufacturer and press the button next.

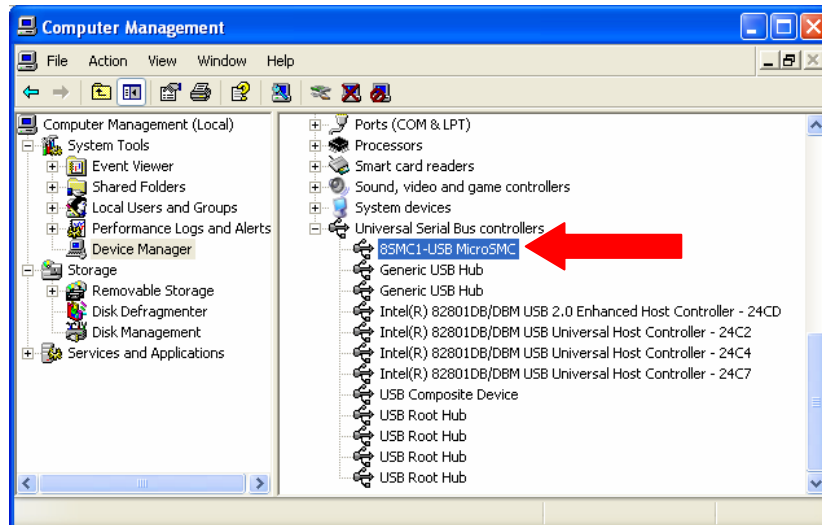


Select Continue Anyway and wait...

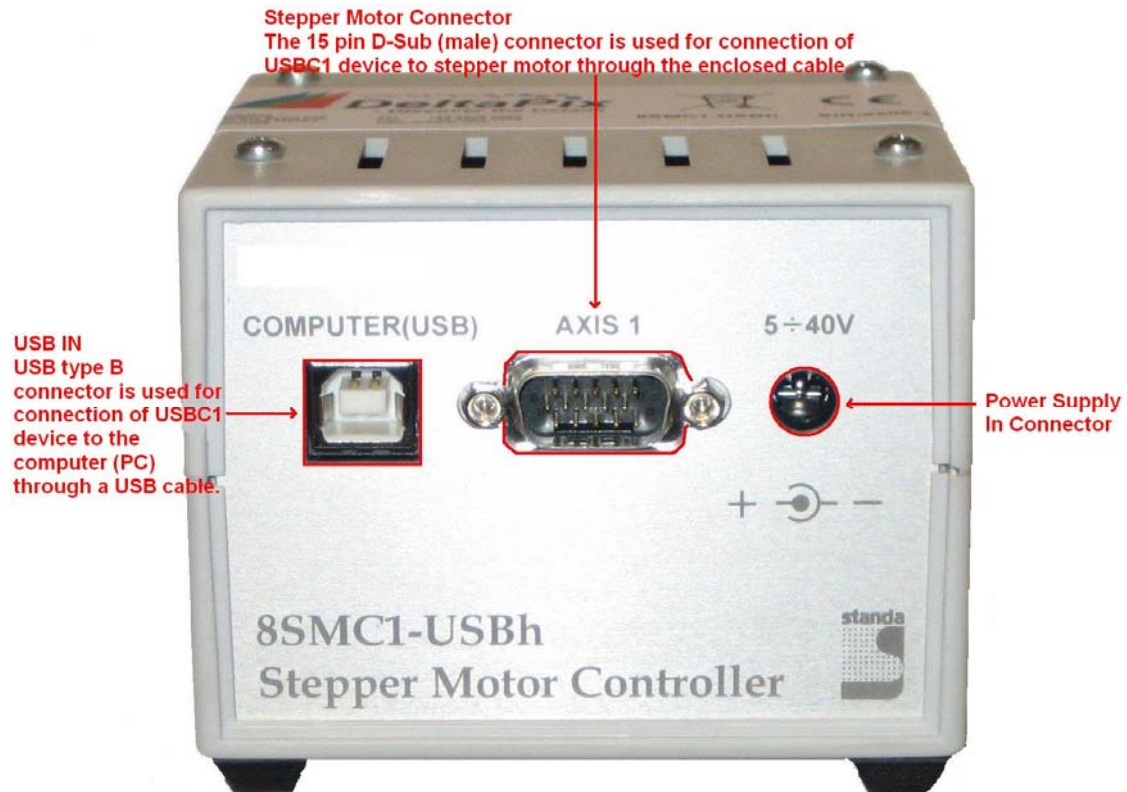


Press the button finish.

The 8SMC1-USB MicroSMC should now be found in the 'Universal Serial Bus controllers' (It is only necessary to check this, if you experience any problems)



## 2.0 Standa Hardware Installation Guide



**USB In** - USB type B connector is placed on the front of USBC1 controller. It is used for connections with computer or higher USB hub through a USB cable.

**Power Supply In** - Average current per phase of stepping motor up to 1.5A - Stepper motor power supply voltage up to 40V. **NEVER PLUG OR UNPLUG THE MOTOR WITH THE POWER SUPPLY CONNECTED!!!**



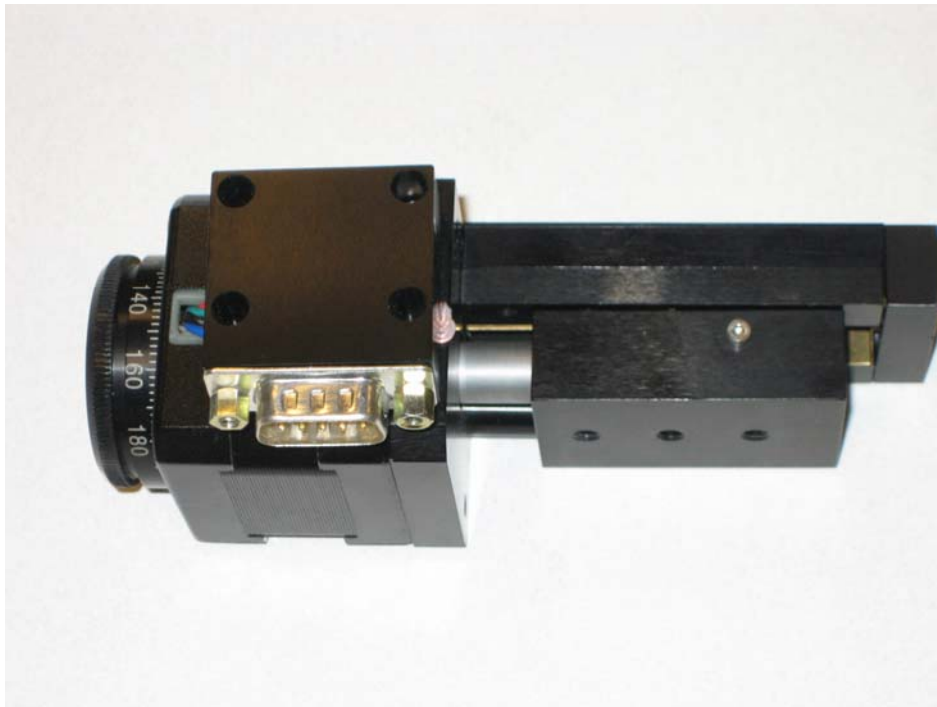
Power Supply In Connector

**Stepper Motor Connector** - This 15 pin D-Sub (male) connector is used for connection of USBC1 device to stepper motor. **NEVER PLUG OR UNPLUG THE MOTOR WITH THE POWER SUPPLY CONNECTED!!!**



*Stepper Motor Connector and Pinout*

USBC1 controller is used to drive the motorized devices like the translation stage (Z-Stage) and devices of other manufacturers, e.g. Marzhauser Fine Focus, if stepper motor parameters match specifications for USBC1 microstep driver.



*Translation Stage (Z-Stage)*