



Minimum System Requirements

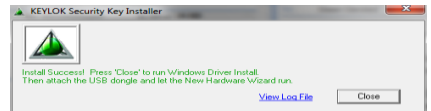
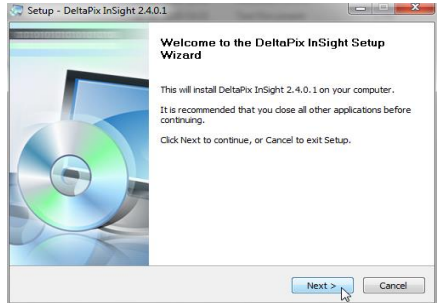
- Windows 7 / 8 or 10 with both 32 and 64 bit versions of Windows will work. Microsoft "dotNET" (normally already installed with Windows)
- Intel i5 (quad core) CPU equivalent or higher
- 4 GB RAM
- 15 GB free hard disk space
- USB 2.0 or USB 3.0 ports dependent on the camera type (USB 1 will not work!)

1 Software Installation prerequisites

- Before software installation:
 - a. Do not attach any camera to the USB port.
 - b. Do not attach any dongle to the USB port.
 - c. You must be logged on the computer with administrator privileges.

Installation procedure - for first time installation

- Download the latest software from www.deltapix.dk, or in case you have bought a software, insert the memory stick enclosed with the software package, and double-click on "Setup_InSight_A.B.C.exe" (the name on the setup program may vary depending on the A.B.C version number).
- A dialog box like shown to the right will appear.
- Follow the onscreen prompts to install the software: Application software, drivers for cameras, the .NET framework and all needed software will be installed. Always click 'Next' or 'Install'.
- One exception from this is the dongle driver installation, like shown below, where you must click 'Close'.
- When all installation is complete, click 'Finish'.
- After the software has been installed, plug the USB 2.0 Camera into a USB 2.0 High-Speed port.
- For Windows Vista and Windows 7 / 8 and 10
 - a. The hardware installation is done automatically – and almost silently.
- For Windows XP:
 - a. The Window's New Hardware Wizard will pop-up detecting a new "Unconfigured Device". Select **Install the software automatically** from the options that are presented to you and click **Next**. A warning may appear notifying you that the drivers have not been digitally signed by Microsoft, click **Continue Anyway** to continue with the driver installation. Then click **Finish** to complete the installation of the drivers.
 - b. After a few seconds the Window's New Hardware Wizard will normally pop-up and show that a new Camera device has been detected, and show the name of this new camera. If a similar camera has previously been installed on the computer, the name of the camera will show up already during step (a) and you can skip step (c).



- c. Select **Install the software automatically** from the options that are presented to you and click **Next**. A warning may appear notifying you that the drivers have not been digitally signed by Microsoft, click **Continue Anyway** to continue with the driver installation. Then click **Finish** to complete the installation of the drivers.

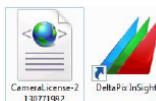
2 Installation procedure - Reinstallation or Update

- The installation software will automatically detect if a previous installation is present and automatically uninstall it before installing new software.
- If you are installing a software update downloaded from our website, please save the setup file in a directory of your choice and run it from there.
- Follow the instructions as Installation procedure - for first time installation

3 Dongle (for the non-free version of DeltaPix InSight)

If you purchased an advanced version of DeltaPix InSight, you received a USB hardware dongle with your order or a "virtual dongle" on the USB-memory stick. If it's a hardware dongle, attach this dongle now, and let the hardware install. In case it's a virtual dongle, follow these steps:

- Store the file "CameraLicense-yyy" (yyy is the serial number of your camera) on the desktop.



- Drag the file onto the 'DeltaPix InSight' icon on the computer desktop. This example programs serial number 2130771982.



- Click 'yes' ... and OK when prompted for "get virtual dongle" and programming done. Now the program is ready to be used with the extra dongle enabled features.

4 Camera Power supply

DeltaPix CMOS and CCD cameras can be directly powered via the USB connection. The Infinity X-32 might need more power than specified in the USB 2.0 documents, but can normally be powered directly. If your computer doesn't supply enough power, you can connect an external power supply, with the following specifications; 5V regulated DC, plug with + in the center, outer plug diameter 5.6mm, inner plug diameter 2.1 mm.

Using a wrong power supply will damage the camera.

Contact DeltaPix local distributor if you are in doubt of any aspect of using an external power supply.

		Camera Models											
		Invenio 1MSII	Invenio 3SII	Invenio 5MSII	Invenio 5SII	Invenio 1DI	Invenio 2DII	Invenio 5DII	Invenio 8DII	Infinity X-32	Invenio 5SIII	Invenio 10SIII	HDMI16DP
Functions and specifications	Sensor size	1/4"	1/2"	1/2.5"	1/2.5"	1/2"	1/1.8"	1/1.8"	1/1.8"	1/1.8"	1/2.5"	1/2.2"	1/2.8"
	Exposure time range, live (ms)	0.01-10000	0.01-2500	0.01-2500	0.01-2500	0.01-10000	0.01-10000	0.01-10000	0.01-10000	0.01-10000	0.05-2000	0.38-2000	0.001-10000
	Exposure time range, snapshot (ms)	⊘	⊘	⊘	⊘	0.01-30000	0.01-30000	0.01-30000	0.01-30000	0.01-30000	⊘	⊘	⊘
	Sensitivity (1-5*, 5* is best)	★★★★	★★	★★★	★★	★★★★	★★★★	★★★★	★★★★	★★★★	★★	★★	★★★
	Frame rate at max resolution	30	12	8	8	9	9	5	3	13	14	7	60
	Max framerate in subsampling mode	90	67	62	62	⊘	⊘	30	20	30	39	25	
	Max resolution	1280x1040	2048x1536	2592x1944	2592x1944	1392x1040	1600x1200	2592x1944	3264x2448	6400x4800	2560x1922	3560x2748	3264x1840
	Individual test certificate	✓	✓	✓	✓	✓	✓	✓	✓	✓	✓	✓	
	Sealed dust proof sensor chamber	✓	✓	✓	✓	✓	✓	✓	✓	✓	✓	✓	
	HQ IR-filter		✓		✓	✓	✓	✓	✓	✓	✓	✓	✓
	DeltaPix "DeltaVU" pixel shifting technology	⊘	⊘	⊘	⊘	⊘	⊘	⊘	⊘	✓	⊘	⊘	⊘
	Binning	⊘	⊘	⊘	⊘	⊘	⊘	⊘	✓	✓	⊘	⊘	⊘
	Gain	1-16	1-16	1-16	1-16	1-8	1-8	1-8	1-8	1-8	1-16	1-16	1-20
	Recommended applications												
	Brightfield / Darkfield	★★★	★★★★	★★★★	★★★★	★★★	★★★★	★★★★	★★★★	★★★★	★★★★	★★★★	★★★★
	DIC	★★★	★★★	★★★★	★★★★	★★★★	★★★★	★★★★	★★★★	★★★★	★★★★	★★★★	★★★★
	Live cell imaging	★★★★	★★★★	★★★★	★★★★	★★★	★★★	★★★	★★★	★★★★	★★★	★★★	★★★★
	Histology/Pathology/Cytology	★★★	★★★★	★★★	★★★★	★★★	★★★★	★★★★	★★★★	★★★★	★★★	★★★★	★★★★
	Semiconductor inspection	★★	★★★	★★★★	★★★★	★★★	★★★★	★★★★	★★★★	★★★★	★★★★	★★★★	★★★★
	Metrology	★★	★★★	★★★★	★★★★	★★	★★★	★★★★	★★★★	★★★★	★★★★	★★★★	★★★
Documentation and Archiving	★★	★★★	★★★★	★★★★	★★★	★★★	★★★★	★★★★	★★★★	★★★★	★★★★	★★★	
Moderate light fluorescence	★★★	★★	★★★	★★	★★★	★★★★	★★★	★★★	★★★★	★★	★★	★★★★	
Low light fluorescenc	★★★	★	★★	★	★★★	★★★★	★★	★★	★★★★	★	★	★★	
Macro Imaging	★	★★★	★★	★★	★★	★★	★★★★	★★★★	★★★★	★★	★★	★★★	
GFP, FISH, NIR	★★★★	★★	★★★★	★★	★★	★★	★★	★★	★★★★	★★	★★	★★	
Luminescence	★★★★	★	★★	★	★★★★	★★★★	★★★	★★★	★★★★	★	★	★★	
HD Video High Speed	★★★★	★★	★★★	★★★★	★	★★	★	★	★★	★★★★	★★★★	★★★★	

RESERVATION FOR ERRORS: DeltaPix reserves the right to change specifications without prior notice