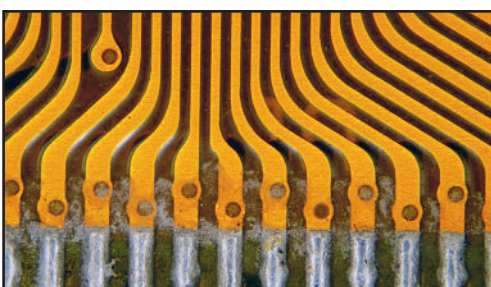
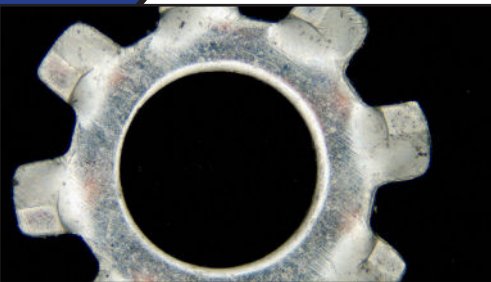


DeltaPix **H4KFW08DPXII**

Multi Interface Microscope Camera

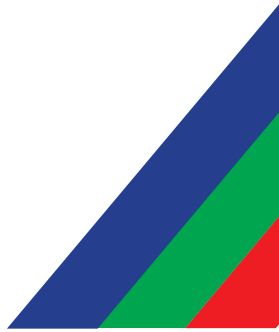


NEW



- 4K resolution
- On screen measurement
- NEW Auto measurement
- NEW Built-in Extended focus
- HDMI , USB, Wifi, and GE

H4KFW08DPXII Camera



DeltaPix H4KFW08DPXII Premium Microscope Camera.

The H4KFW08DPXII produces high-resolution images with vibrant natural colors suited also for critical applications like Pathology. It has a state-of-the-art built-in measurement software with auto edge detection and extended focus with no need for a computer.

With the H4KFW08DPXII users can enjoy fast, comfortable, and user-friendly on-screen operation – improving sample evaluation, and measurement, facilitating effective collaborations, and documentation in high resolution.

For more advanced applications the user has the option to connect the camera to a PC via USB 3.0, Wifi or GE, and use DeltaPix InSight to make further analysis.

High-quality, cost-effective and flexible

The DeltaPix H4KFW8DPXII microscope camera has C-mount interface making it easily and cost-efficiently fitted on most standard microscopes. Additionally, it has multiple interfaces providing unmatched versatility for any use case.

User-friendly Camera

Plug and play – the HDMI interface provides high speed and ease of installation on any 4K monitor with HDMI input. No need for computer, because the H4KFW8DPXII microscope camera has built-in software. Optionally, the camera can be used with PC software.

Applications

The H4KFW08DPXII camera provides multiple connection options making it versatile and suitable for many applications.

Typical applications:

- Documentation and publishing
- Material science
- Metrology
- Quality control
- Dark Field
- Bright Field
- Fluorescence
- Semiconductor inspection
- Pathology
- Digital Classroom

Camera Dimensions



Built-in advanced software

The H4KFW08DPXII has built-in software that provides the operator with advanced imaging and measuring tools. This software includes features such as auto edge detection, extended focus, and geometric measurement tools.

Onboard measurement tools:

- Angle
- 4 Points Angle
- Point (Point Counter)
- Arbitrary Line
- 3 Points Line
- Horizontal Line
- Vertical Line
- 3 Points Vertical Line
- Parallel
- Rectangle
- 3 Points Rectangle
- Ellipse
- 5 Points Ellipse
- Circle
- 3 Points Circle
- Annulus
- 3 Points Annulus
- Two Circles and its Center Distance
- 3 Points Two Circles and its Center Distance

- Arc

- Polygon

- Curve

- Scale Bar

- Arrow

Auto Measurement

- Two Points Distance

- Circle Detect

- Annulus Detect

- Rectangle Detect



DeltaPix InSight Software

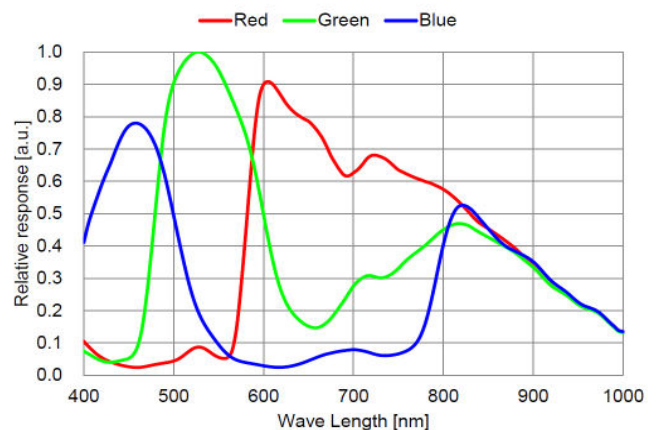
The H4KFW08DPXII camera Includes DeltaPix InSight Basic software which is a powerful platform for camera control, precise measurements, and analysis. DeltaPix InSight allows expansion with a multitude choice of optional modules, for a wide range of advanced applications with an easy-to-use user interface. Available functions in the optional modules are for example extended focus, HDR for wide dynamic images, 3D measurements/ 3D topography, Roughness measurement, stitching including 3D stitching, Object Counting, and much more.

Technical Highlight

- 1/1.8" Sony sensor
- 8.3 Megapixels (4K)
- Up to 60 FPS in HDMI
- Ultra high sensitivity
- Built-in advanced measuring software

Spectral Sensitivity

(Excludes lens characteristics and light source characteristics.)



Specifications

H4KFW08DPXII camera	
Camera model	H4KFW08DPXII
Live preview resolution	3840 x 2160 @60FPS (HDMI) 4K 1920 x 1080 @60FPS (HDMI) 3840 x 2160 @30FPS (USB 3.0) 4K 3840 x 2160 @30FPS (WiFi)
Video Record	4K (8.3MP 3840x2160)
Still image resolution	8.3Mpixels (3840x2160)
Sensor size	1/1.8" Sony back illuminated Exmor sensors 7.68mm x 4.32mm
Pixel size	2µm x 2µm
Exposure size	0.04ms~1000ms
Gain	0dB to 30 dB
Sensitivity	1364 mv with 1/30s 0.1 mv with 1/30s
Shutter	Rolling
Lens Mount	C-Mount
White balance	Automatic or Manual
Data interface	HDM 2.0, USB 3.0,Wifi and GE
Software	Built-in, UI in English /Chinese / Korean / Thai / French / German / Japanese / Italian InSight Basic (Included)
Data format and compression	Still image, JPEG or Tiff H264 encoded video
Minimum requirements	4K/Full HD monitor with HDMI input
Accessories	Mouse,32GB USB memory stick 12V power supply.
Power	12V
Dimension	100 x 75 x 54mm
Weight	

*Disclaimer:

While every effort has been made to ensure the accuracy of the information in this datasheet, errors or omissions may occur. Specifications are subject to change without prior notice. The manufacturer assumes no responsibility for typographical errors or inaccuracies. Please verify all details before final use or implementation.

Head Quarter & Sales

Hassellunden 16
DK 2765 Smorum, Denmark

☎ +45 4676 0205

✉ info@deltapix.dk