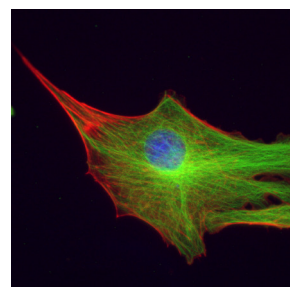
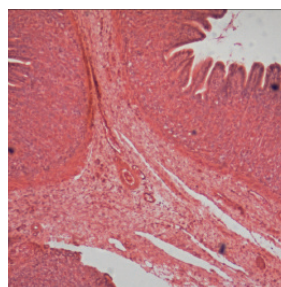
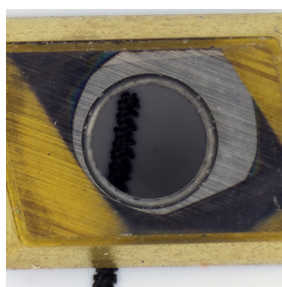
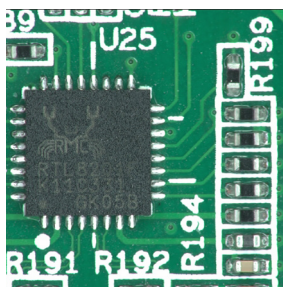
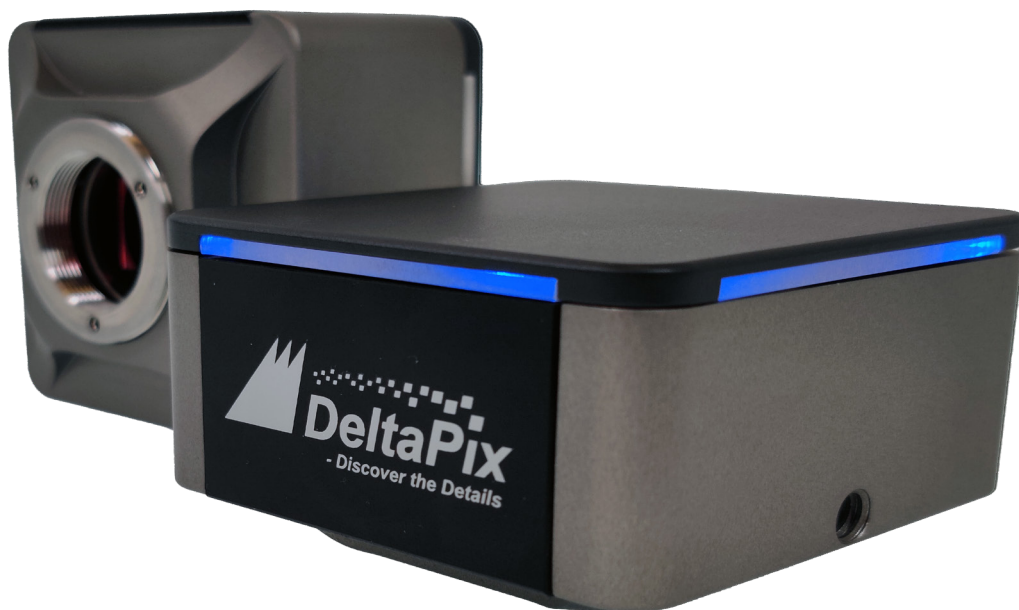


# Invenio EIII

## Microscope cameras



- High resolution
- Crisp colors
- High-speed live video
- High-quality Sony sensor

# Invenio EIII Cameras

## DeltaPix EIII Premium Microscope Cameras Series

Discover the DeltaPix EIII premium microscope camera series, designed to provide you with fast and precise high-resolution live video streaming and exceptional still images. These cameras offer a user-friendly setup for everyday use, all at an outstanding price-to-performance ratio.

### Cutting-Edge Technology

The Invenio EIII cameras are built on a foundation of well-recognized and high-quality Sony sensors, ensuring excellent image quality, sensitivity, color fidelity, and speed.

## Invenio EIII Premium Cameras: Attention to Detail and Practical Design

Our new Invenio EIII premium cameras have been meticulously crafted with a keen focus on details and features. Their housing design not only stands out visually but is also practical and compact, ensuring they seamlessly integrate into your workspace.

## High-quality, cost-effective and flexible

The new Invenio EIII microscope camera series has C-mount interface making it easily and cost-efficiently fit on most standard microscopes.

## User-friendly Camera

Plug and play – the USB 3.0 interface provides high speed and ease of installation on any computer.

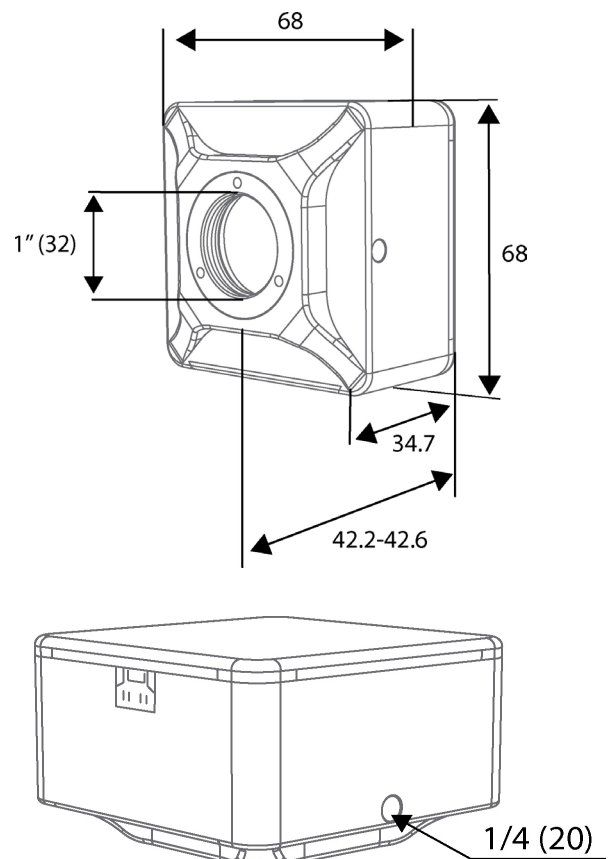
## Applications

The Invenio EIII camera series come in 3 different resolutions and sensor sizes making this series versatile and suitable for many applications.

### Typical applications:

- Material science
- Metrology
- Dark Field
- Bright Field
- Fluorescence
- Cytology
- Biology

## Camera Dimensions



## Ultra-Low noise images

The Invenio EIII Microscope cameras are all designed with Sony's newest sensor type the Exmor™, which is a superior sensor type, especially because The Exmor™ sensors digitize the pixels before the column signals are multiplexed, thereby minimizing the noise signal significantly compared to standard CMOS sensors.

## Camera Design for Reduced Noise

DeltaPix has carefully designed the camera to minimize noise originating not only from the sensor but also from the surrounding electronic circuits and wires. Through thoughtful selection of components, wiring, grounding, and shielding, we have achieved a significant reduction in noise levels.

### Technical Highlight Invenio 12EIII:

- 1/1.7" Sony sensor
- 12 Megapixels
- Up to 20 FPS in full resolution
- Ultra-light sensitive

## Smear-Free Images with Exmor™ Sensor

Our camera features an Exmor™ sensor designed for smear-free imaging. Unlike other noname sensors, it provides this feature without compromising on dynamic range and contrast, addressing the limitations often associated with traditional CMOS sensors.

## DeltaPix InSight Software

All Invenio EIII cameras Include DeltaPix InSight Basic software which is a powerful platform for camera control, precise measurements, and analyses. DeltaPix InSight allows expansion with a multitude choice of optional modules, for a wide range of advanced applications with an easy-to-use user interface. Available functions in the optional modules are for example extended focus, HDR for wide dynamic images, 3D measurements/ 3D topography, Roughness measurement, stitching, Object Counting, and much more.

### Technical Highlight Invenio 20EIII:

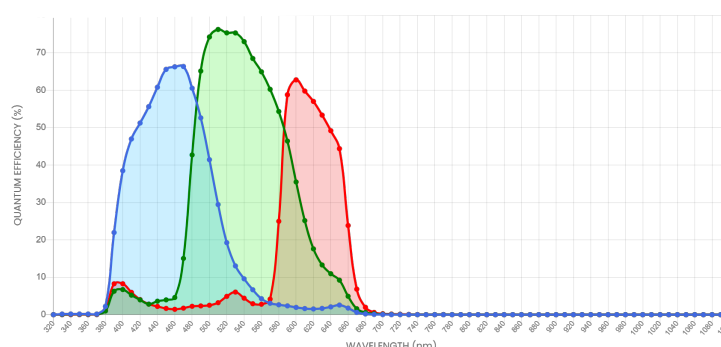
- 1" Sony sensor
- 20 Megapixels
- Up to 15 FPS in full resolution
- Ultra-light sensitive

### Technical Highlight Invenio 10EIII:

- 2/3" Sony sensor
- 10 Megapixels
- Up to 15 FPS in full resolution
- Ultra-light sensitive

## Spectral Sensitivity

### Invenio EIII color



# Specifications

Invenio EIII cameras			
Camera model	Invenio 10EIII	Invenio 12EIII	Invenio 20EIII
Live preview resolution	3840 x 2560 @15FPS 3200 x 3200@ 15FPS 1920 x 1280 @ 35FPS 1600 x 1600 @ 35FPS	4000 x 3000 @20FPS 2048 x 1080@ 40FPS	5440 x 3648@15FPS 2736 x 1824@35FPS 1824 x 1216@60FPS
Still image resolution	10 Mpixels (3200x3200) 9.83 Mpixels (3840x2560) 2.56Mpixels (1600x1600) 2.46Mpixels (1920x1280)	12Mpixels (4000x3000) 2.21Mpixels (2048x1080)	19.8Mpixels(5440x3648) 5Mpixels (2736 x 1824) 2.2 Mpixels(1824x1216)
Sensor size	2/3" Sony Exmor 9.15mm x 6.86mm	1/1.7" Sony Exmor 7.4mm x 5.55mm	1" Sony Exmor 13.06mm x 8.76mm
Pixel size	2.4 µm x 2.4 µm	1.85µm x 1.85µm	2.4µm x 2.4µm
Exposure size	0.1ms-15 Seconds		
Gain	1-50		
Sensitivity	462mv with 1/30s	280mv with 1/30s	462mv with 1/30s
Shutter	Electronic rolling shutter		
Peak OE	75% @ 520nm	70% @ 520nm	75% @ 520nm
Lens Mount	C		
White balance	Automatic, manual or spot white balance		
Data interface	USB 3.0 and One optical isolated trigger input		
Software	DeltaPix InSight Basic included		
Data format and compression	24-bit uncompressed Tiff, 24bit JPEG compressed and 24-bit loss-less compressed JPEG2000		
Minimum PC requirements	Intel i5 9 <sup>th</sup> gen or newer CPU 16 GB RAM 250 GB SSD drive USB 3.0 port Windows 10 and 11 DeltaPix InSight works with Windows 64Bits A high-resolution monitor		
Power	USB ~ 4W		
Dimension	68x68x34.7mm		
Weight	300g		

10/2023

## Head Quarter & Sales

Hassellunden 16  
DK 2765 Smorum, Denmark

☎ +45 4676 0205  
✉ info@deltapix.dk

## Development

Jacob Petersens Vej 11  
DK 9240 Nibe, Denmark

☎ +45 4676 0205  
✉ info@deltapix.dk