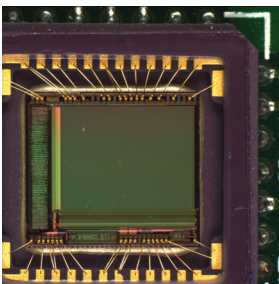
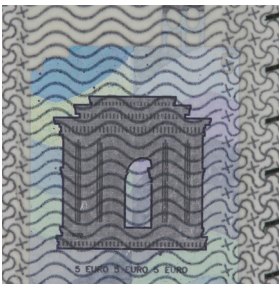


H4KFWSD08DPX

3 IN 1 MICROSCOPE CAMERA



- 4K resolution
- On screen measurement
- 4K Video record
- Digital Classroom with APP
- HDMI, USB, GE and WiFi

H4KFWSD08DPX Camera

DeltaPix H4KFWSD08DPX Premium Microscope Camera.

The H4KFWSD08DPX produces high-resolution images with vibrant natural colors suited also for critical applications like Pathology Likewise it has a state of the art built-in measurement software providing highly effective measurement tools directly on the screen with no need for a computer.

With the H4KFWSD08DPX users can enjoy fast, comfortable, and user-friendly on-screen operation – improving sample evaluation, and measurement, facilitating effective collaborations, and documentation in high resolution. For more advanced applications

the user has the option to connect the camera to a PC via USB 3.0, GE, or WiFi and use DeltaPix InSight in order to make further analysis. Moreover, this camera provides a completely new platform for educational applications because it can stream video to Android smartphones making it super easy to share images and videos with students

High-quality, cost-effective and flexible

The DeltaPix H4KFWSD08DPX microscope camera has C-mount interface making them easily and cost-efficiently fitted on most standard microscopes. Additionally, it has multiple interfaces providing unmatched versatility for any use case.

User-friendly Camera

Plug and play – the HDMI interface provides high speed and ease of installation on any 4K monitor with HDMI input. No need for computer, because the H4KFWSD08DPX microscope camera has a built-in software. Option to use it with PC software or Smartphone app.

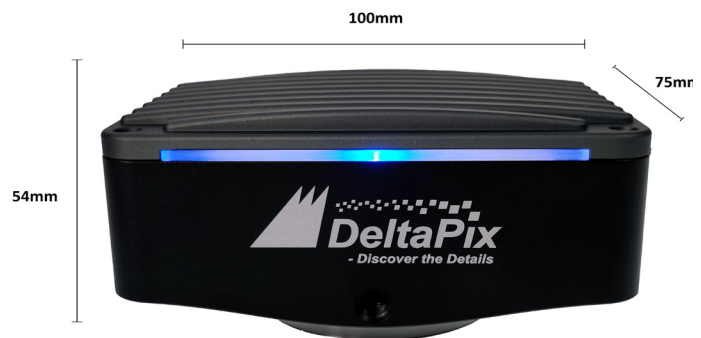
Applications

The H4KFWSD08DPX camera provides multiple connection options making this series versatile and suitable for many applications.

Typical applications:

- Documentation and publishing
- Material science
- Metrology
- Quality control
- Dark Field
- Bright Field
- Fluorescence
- Semiconductor inspection
- Pathology
- Digital Classroom

Camera Dimensions



Ultra-Low noise images

The Invenio EIII Microscope cameras are all designed with Sony's newest sensor type the Exmor™, which is a superior sensor type, especially because The Exmor™ sensors digitize the pixels before the column signals are multiplexed, thereby minimizing the noise signal significantly compared to standard CMOS sensors.

Camera Design for Reduced Noise

DeltaPix has carefully designed the camera to minimize noise originating not only from the sensor but also from the surrounding electronic circuits and wires. Through thoughtful selection of components, wiring, grounding, and shielding, we have achieved a significant reduction in noise levels.

Technical Highlight H4KFWS08DPX:

- 1/1.8" Sony sensor
- 8.3 Megapixels
- Up to 60 FPS in HDMI
- Ultra-light sensitive

Smear-Free Images with Exmor™ Sensor

Our camera features an Exmor™ sensor designed for smear-free imaging. Unlike other noname sensors, it provides this feature without compromising on dynamic range and contrast, addressing the limitations often associated with traditional CMOS sensors.

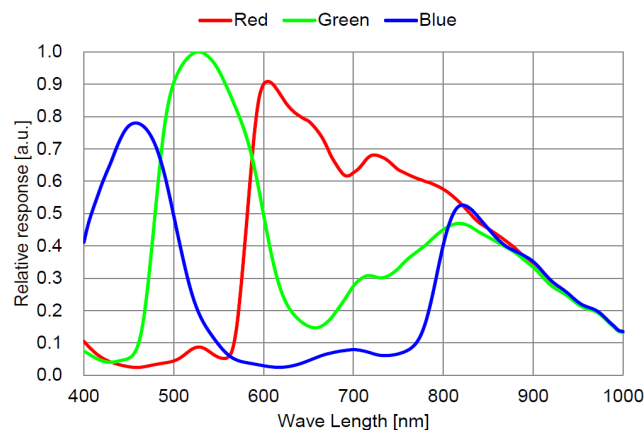
DeltaPix InSight Software

All Invenio EIII cameras Include DeltaPix InSight Basic software which is a powerful platform for camera control, precise measurements, and analyses. DeltaPix InSight allows expansion with a multitude choice of optional modules, for a wide range of advanced applications with an easy-to-use user interface. Available functions in the optional modules are for example extended focus, HDR for wide dynamic images, 3D measurements/ 3D topography, Roughness measurement, stitching, Object Counting, and much more.

Spectral Sensitivity

Spectral Sensitivity Characteristics

(Excludes lens characteristics and light source characteristics.)



Specifications

H4KWFS08DPX camera	
Camera model	H4KWFS08DPX
Live preview resolution	3840 x 2160 @60FPS (HDMI) 1920 x 1080 @60FPS (HDMI) 3840 x 2160 @30FPS (USB 3.0) 3840 x 2160 @30FPS (WiFi)
Video Record	4K
Still image resolution	8.3Mpixels (3840x2160)
Sensor size	1/1.8" Sony back illuminated Exmor sensors 7.68mm x 4.32mm
Pixel size	2µm x 2µm
Exposure size	0.04ms~1000ms
Gain	0dB to 30 dB
Sensitivity	505 mv with 1/30s 0.13 mv with 1/30s
Shutter	Rolling
Lens Mount	C-Mount
White balance	Automatic or Manual
Data interface	HDMI2.0, USB 3.0, WiFi and GE
Software	Built-in, UI in English /Chinese / Korean / Thai / French / German / Japanese / Italian InSight Basic (Included) *Free Android APP
Data format and compression	Still image, JPEG or Tiff H264 encoded video
Minimum requirements	4K/Full HD monitor with HDMI input
Accessories	Mouse,32GB High speed SD card and 12V power supply.
Power	12V
Dimension	100 x 75 x 54mm
Weight	

10/2023

Head Quarter & Sales

Hassellunden 16
DK 2765 Smorum, Denmark

+45 4676 0205
info@deltapix.dk

Development

Jacob Petersens Vej 11
DK 9240 Nibe, Denmark

+45 4676 0205
info@deltapix.dk