

# DeltaPix Prior ES10ZE Installation Guide



## 1 Minimum System Requirements

- Windows XP (Service Pack 2), Windows Vista or Windows 7 with Microsoft. Both 32 and 64 bit versions of Windows will work. ".NET 3.5" (enclosed on the DeltaPix software memory stick)
- 1.3 GHz Pentium III or higher (compatible)
- 1 GB RAM
- 5 GB free hard disk space
- USB 2.0 ports (USB 1 will not work!)

## 2 Software Installation prerequisites

- Please notice that installing Prior drivers is not trivial, and the person installing the drivers, must be an experienced IT specialist, as the following procedure might not work on all computers and windows versions directly. This is not due to DeltaPix products, but due to the limited compatibility of Prior drivers and software. Before software installation:
  - a. Do not attach the ES10ZE unit to the computer.
  - b. Install DeltaPix InSight, DeltaPix cameras and dongles according to the separate installation manual.
  - c. You must be logged on the computer with administrator privileges.
  - d. Attach the DeltaPix software memory stick enclosed with the DeltaPix InSight software package.

# DeltaPix Prior ES10ZE Installation Guide

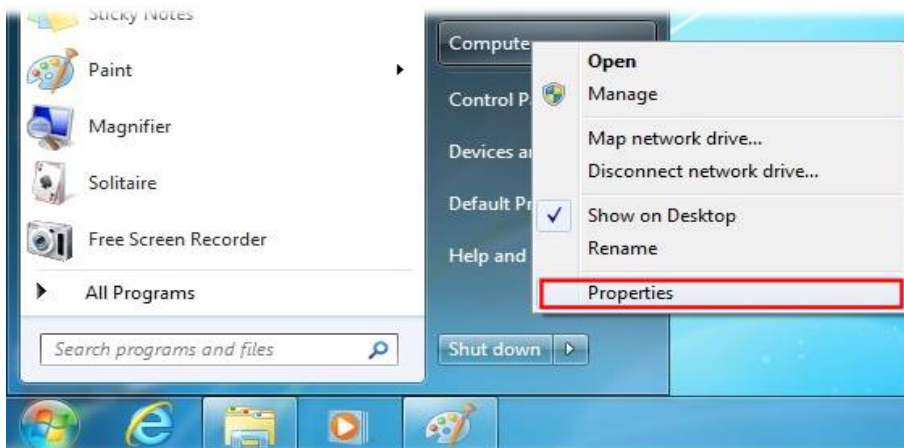


## 3 Installation procedure - Standard Installation, Win 7

- Standard installation procedure, works for Win 7, in 32 and 64 bit versions.
- Turn the power on the ES10ZE on, and connect it to the computer with a USB cable.
- Windows will try to install the right software, but fails. A message like seen below will show up. The message might differ in other Windows versions.

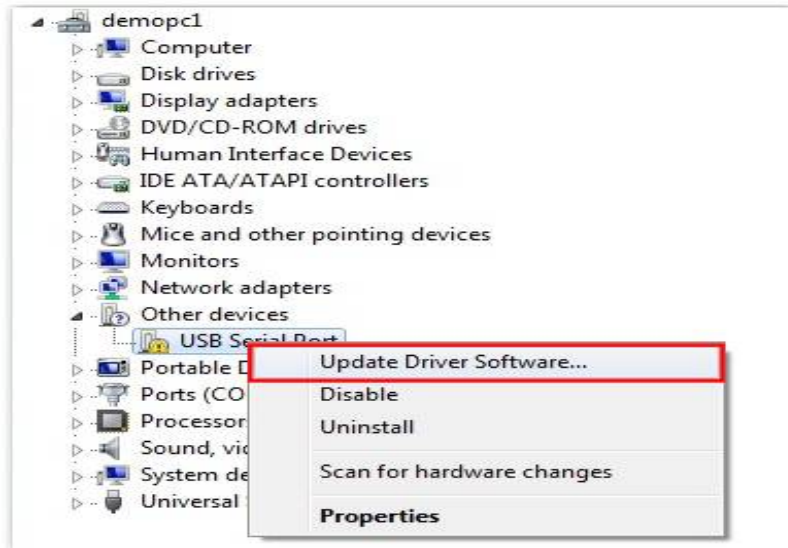


- Open the Hardware Device manager.  
to do this:
- Click start in the lower left corner, right click on "computer", select "properties" and then select "device manager" in the upper left corner of the new panel showing up. The device manager can also be accessed through the control panel.

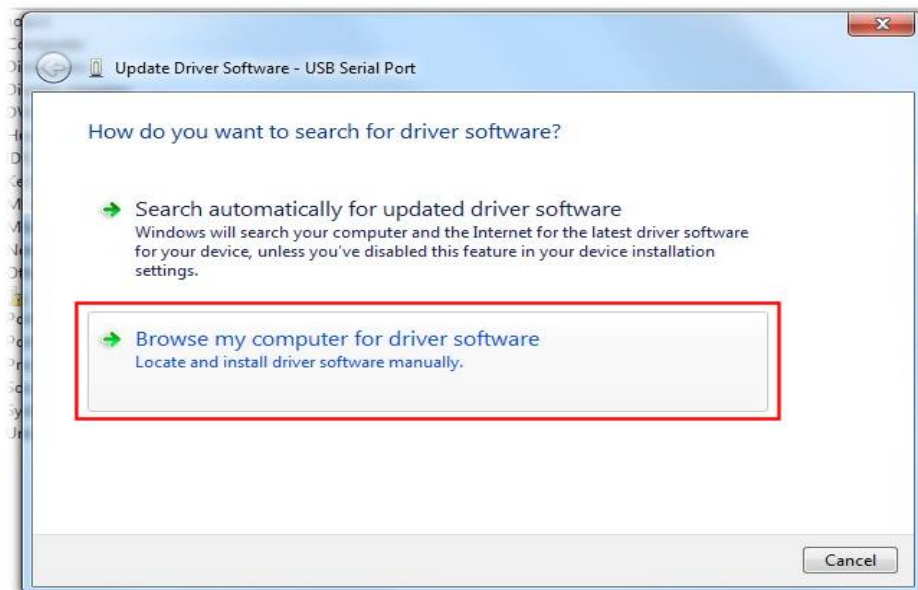


- In the device manager, find the new device, normally shows up like a "USB serial port" or likewise. It will have a question mark or an exclamation. Right click on the device and select "update driver software".

# DeltaPix Prior ES10ZE Installation Guide

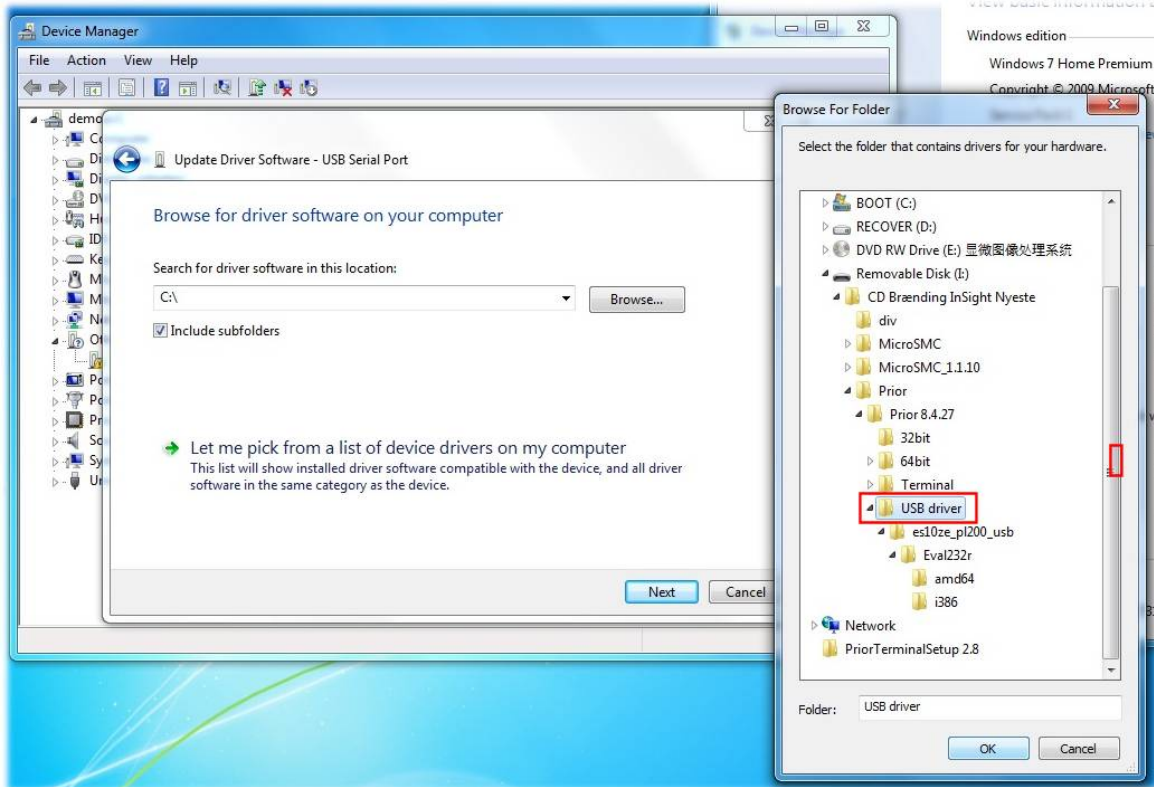


- Now select "browse my computer....." see below.

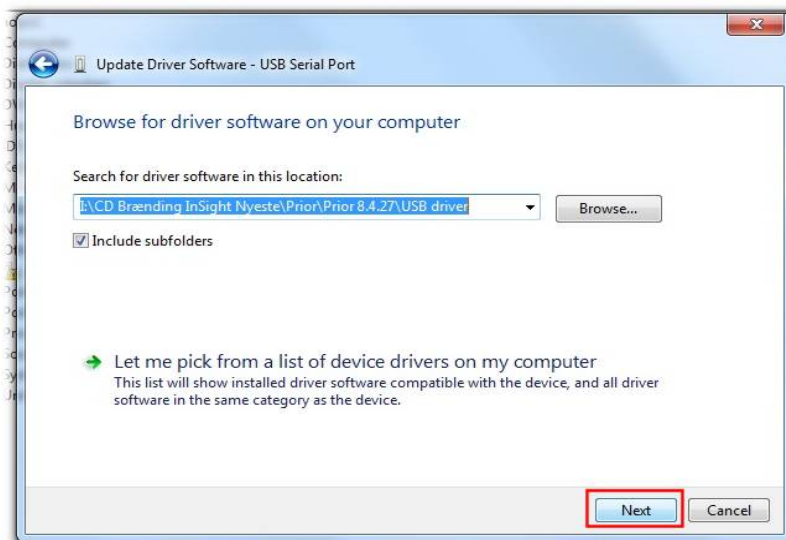


- In the browser menu, select on the DeltaPix software memory stick attached to the computer, and find the "USB driver" directory. When found, the "OK" button will be highlighted.

# DeltaPix Prior ES10ZE Installation Guide



- A new menu will show up, see below. Click on "next".



# DeltaPix Prior ES10ZE Installation Guide



- Windows will now install the driver software for ES10ZE, and the below message will show up.



- Close this dialogue, the device manager will show up again, showing the new device, "USB-serial port"

## 4 Installation procedure - Standard Installation, Win XP and Vista

- Standard installation procedure, works for Win XP and Vista in 32 and 64 bit versions.
- Make sure you have installed Microsoft ".NET" 3.5 on your computer (if updated regularly, it will probably already have been installed). If not, installed it from the DeltaPix USB-memory stick or if not enclosed on that, please download it from here: <http://www.microsoft.com/en-us/download/details.aspx?id=21> (this is a complete setup file that can run without connection to the internet)
- On the DeltaPix USB-memory stick, find directory Prior/PriorX.XXX/32bit and run the set-up file.
- Do the same with the setup file in the directory, "Terminal".
- Restart the computer
- Plug in the USB cable from the ES10ZE to the computer and the following pop up will appear (precise text can be different)

# DeltaPix Prior ES10ZE Installation Guide



- Select "No" and click "Next". The following pop up will be displayed:

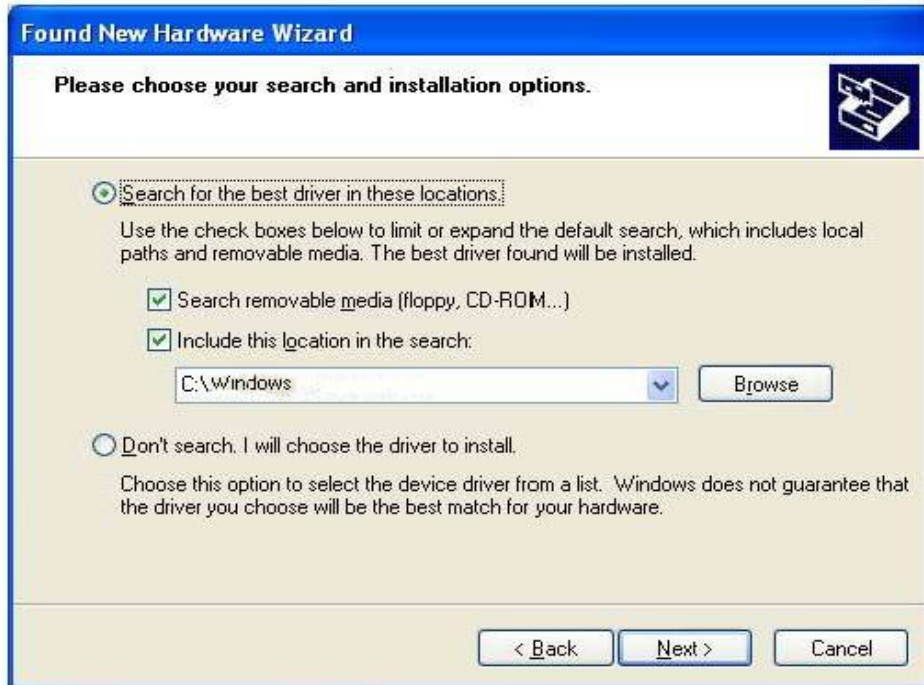


- Select "install from a specific installation.." and the following pop up sequence will display:

# DeltaPix Prior ES10ZE Installation Guide



# DeltaPix Prior ES10ZE Installation Guide



- Press "Next" and the following pop up will display (note that the name of the device can be different of what is displayed here)



- Press "Continue anyway" and the following pop up will display after the installation process:



# DeltaPix Prior ES10ZE Installation Guide

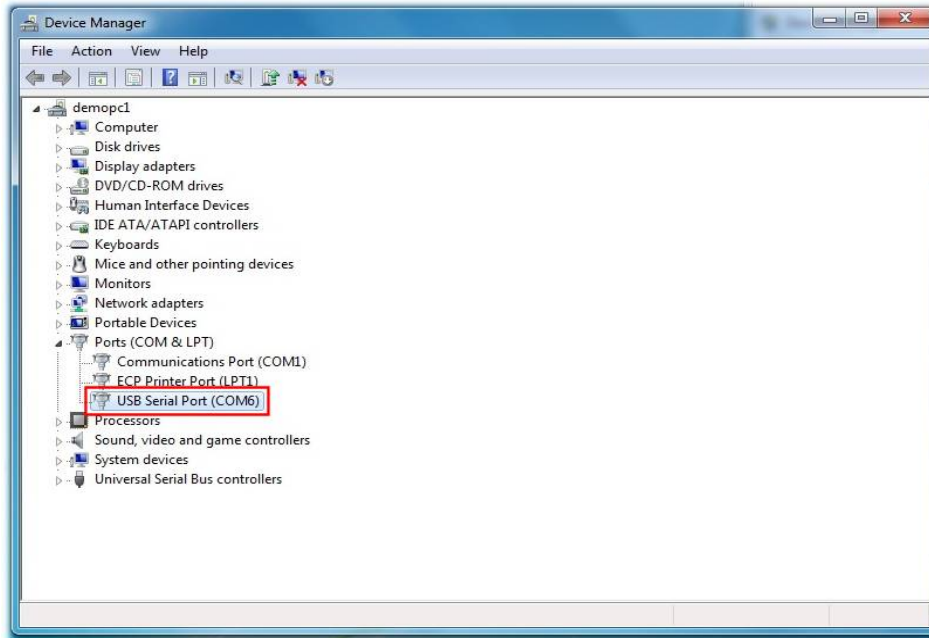


- Press finish and the installation might be finished. In some cases Windows will ask for the sequence to be repeated.
- Restart the computer

## 5 Setting up InSight to control the Z-focus

- Start Device manager, if not already started, in case of Win 7 setup procedure. How to start Device manager, see the start of section 3. The device manager should display a window like shown below:

# DeltaPix Prior ES10ZE Installation Guide

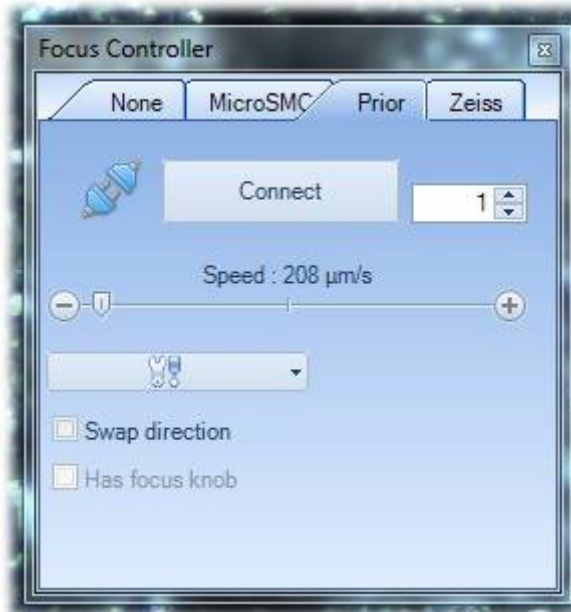


- Note the "com" number, in this case number 6, the DeltaPix InSight software will need this number to control the ES10ZE device.
- Now close the device manager and the control panel, and start DeltaPix InSight. In the "System automation" tab, click on the small arrow on the lower right corner of the "Focus automation" part.

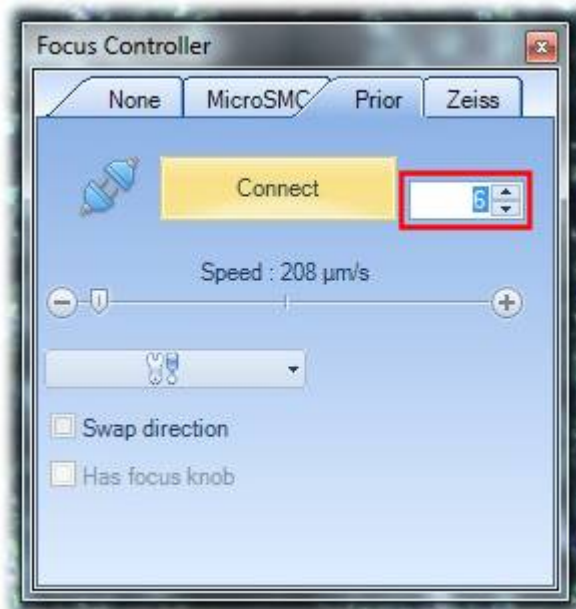


- A new dialogue will show up:

# DeltaPix Prior ES10ZE Installation Guide

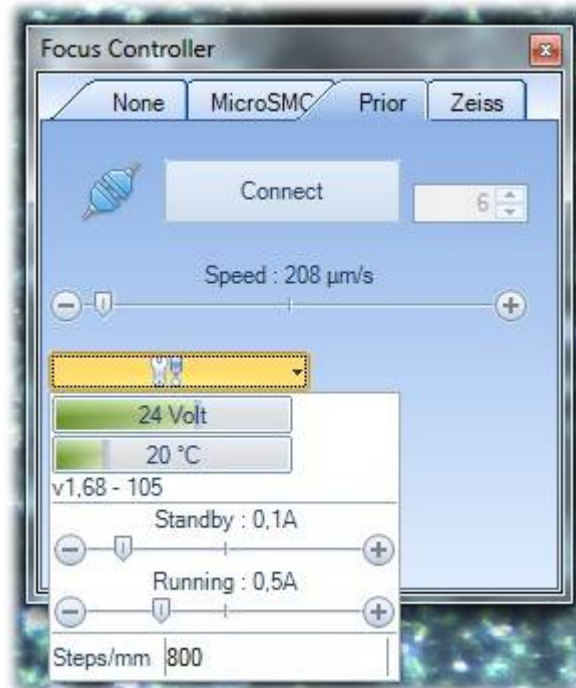


- Beside the "connect" button", a number can be seen. Change this number to the number of the "com" port of the "USB serial port" which was noted previously. In this example it was number 6.

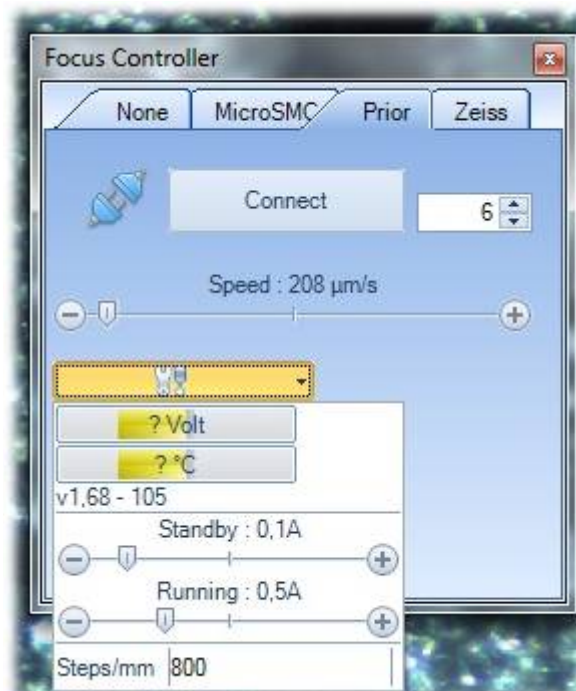


- Now click on the connect button. If the ES10ZE is now connected, press on the "tool" button below, to see if the software can read the status from the unit. In case it can, it will look like this:

# DeltaPix Prior ES10ZE Installation Guide



- In case it looks like below, please press the connect button again, and reopen the tools dialogue. In case it is still not working, close the software and restart the computer. Do not power off the ES10ZE device during restart.



# DeltaPix Prior ES10ZE Installation Guide



- 
- After restart, repeat the connection procedure, and the system should now work. For further instructions see the InSight manual or eventually contact DeltaPix support at [support@deltapix.dk](mailto:support@deltapix.dk)

NOTE: PRIOR products are unlike most other USB devices not digitally signed, and can therefore not be installed automatically, which is the cause of this complicated installation procedure. In some cases, it might even be necessary to start Windows in a mode allowing to install none digitally signed drivers. To do this, press F8 during start up of the computer. In the boot menu, select "Advanced Startup" and disable the Digitally Signed Driver service. This will normally allow installation of non digitally signed drivers (only at the time of this boot).