

1 **DeltaPix InSight and Zeiss MTB**

2 The DeltaPix InSight supports important functionality from the Zeiss MTB microscope manager.

- 3 • Controlling and reading the Focus – allowing Extended Focus and Autofocus.
- 4 • Controlling and reading the Zoom – allowing very easy calibration.
- 5 • Detection of objective change

6 **Minimum System Requirements**


- 7 • Windows XP (Service Pack 2), Windows Vista or Windows 7 with Microsoft. Both 32 and
- 8 64 bit
- 9 • 1.3 GHz Pentium III or higher (compatible)
- 10 • 1 GB RAM
- 11 • 5 GB free hard disk space
- 12 • USB 2.0 ports (USB 1 will not work!)

13 **Software Installation prerequisites**

- 14 • Install DeltaPix InSight, DeltaPix cameras and dongles according to the separate
- 15 installation manual.
- 16 • You must be logged on the computer with administrator privileges.

17 **Install the Zeiss MTB2004 software**

18 The Zeiss MTB needs to be installed on your computer. Please install the Zeiss software from the
19 Zeiss installation DVD (Zeiss DVD 41 is recommended).

20  Please note that DeltaPix InSight as default works with MTB version 1.8.0.7

21 *On a computer with a 32bit operating system*

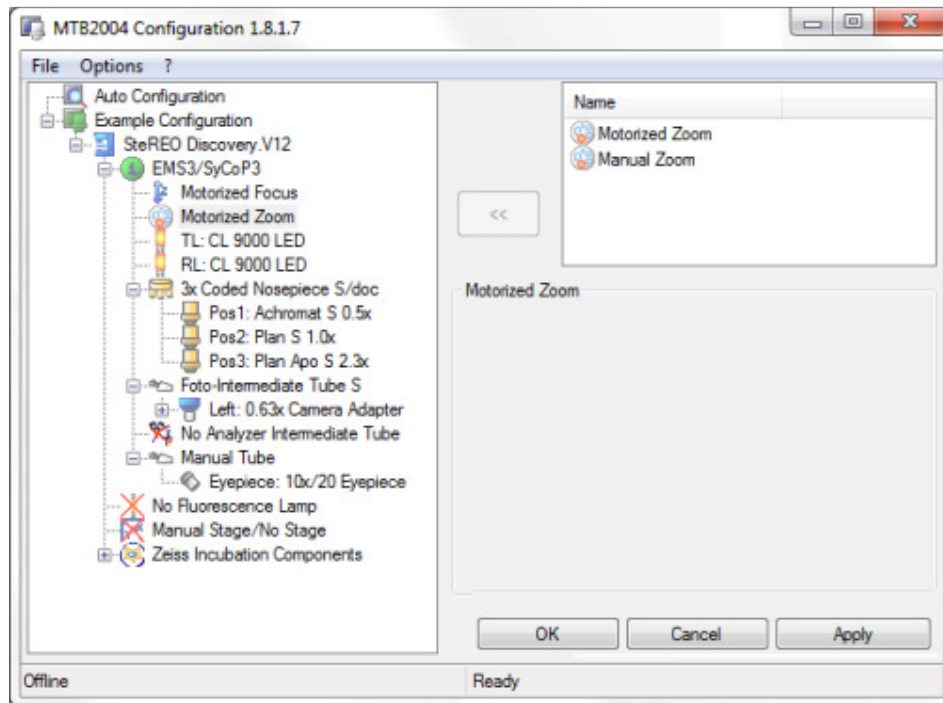
- 22 • Install the 32bit version of the Zeiss MTB.
- 23 • Install 32bit USB device drivers.

24 *On a computer with a 64bit operating system*

- 25 • Install the 32bit version of the Zeiss MTB.
- 26 • Install 64bit USB device drivers.

27 **Configure the Zeiss microscope**

28 Use the Zeiss configuration to set up the MTB interface. Please consult the Zeiss documentation
29 on details on how to do this.



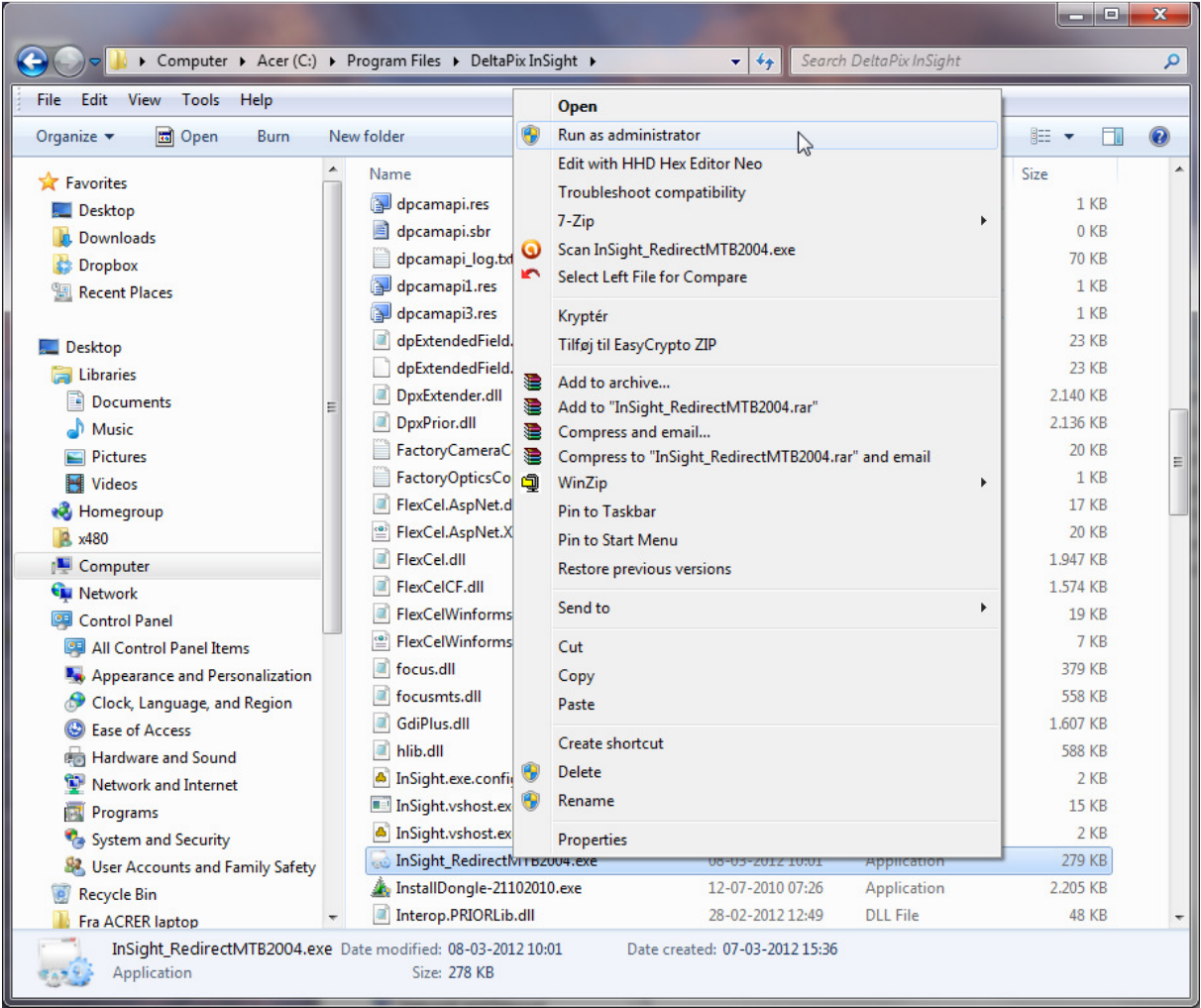
30

31 The caption of the program will show the actual version of the MTB – in this example the version
32 is 1.8.1.7.

33

34 **Run the InSight_RedirectMTB2004.exe program**

35 In the DeltaPix InSight installation directory run the InSight_RedirectMTB2004.exe program as
36 administrator.

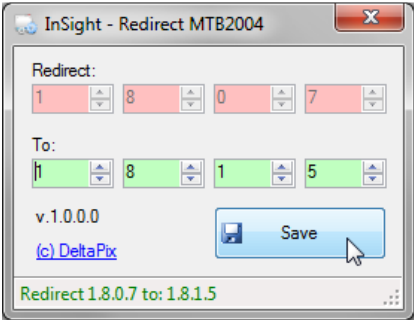


37

38

39 **Select the version of your MTB2004.**

40 Select your version of MTB2004, by changing the green up-down textboxes. Then 'Save'.



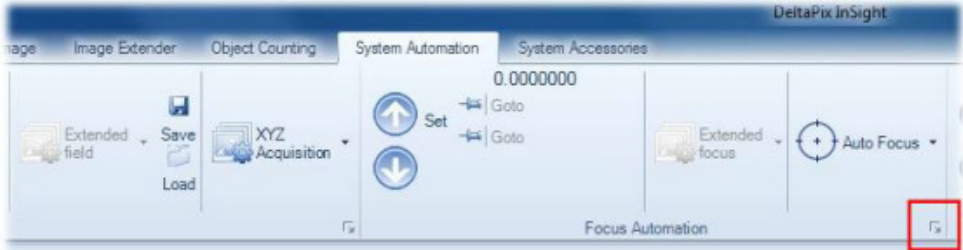
41

42

43

44 Connect to the Zeiss MTB microscope

45



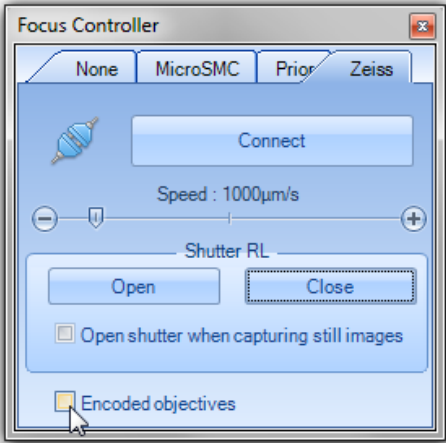
46

47

Prior controllers connect via the Zeiss MTB server.

If connection succeeds, the plug icon changes status to connected plugs.

Check the **Encoded objectives** for automatic read back of selected objective, note that this also impacts the calibration requirements.



48

49 Calibration of the microscope objectives.

50 The objectives need to be calibrated in order to do precise measurements. Please consult the
51 'DeltaPix InSight' manual for more information on how to do this.